



EUROLabWorkstation ELISA

High-throughput ELISA analytics



- Fully automated processing of ELISA test kits: up to 15 ELISA plates per run
- The highest throughput system on the market: > 200 tests per hour
- Flexible loading of samples, reagents and dilution plates
- Automatic identification of patient samples, reagents, dilution and ELISA plates – 100% traceability
- Economical and precise pipetting with 10 washable needles
- Convenient and intuitive operation
- Excellent service – reagents, instruments and software from one manufacturer



Workflow optimisation

- Open system for the processing of ELISA kits from different manufacturers, even combined in one run
- Spatial separation of liquid handling and ELISA plate processing enables parallel workflows
- Maximum process efficiency through intelligent multi-needle system and correspondingly adjusted labware
- Ready-for-use barcoded reagents



Precise and efficient pipetting

- 10 coated stainless steel needles and precision pumps for optimum pipetting accuracy
- Optimisation of process efficiency through economic travel ways
- Pipetting without carryover through efficient needle washing
- Secure pipetting procedure owing to level and clot detection
- Multishot function for the dispensing of samples and reagents



Flexible system configuration

- Loading of patient samples in all conventional primary tubes or in 96-well plates according to ANSI SLAS 1-2004 (R2010)
- 45 tracks for the flexible loading with sample and reagent racks as well as accessories
- Up to 8 heatable incubators
- Up to 4 shakeable, heatable incubators
- 2 ELISA wash units with up to 6 different wash buffers





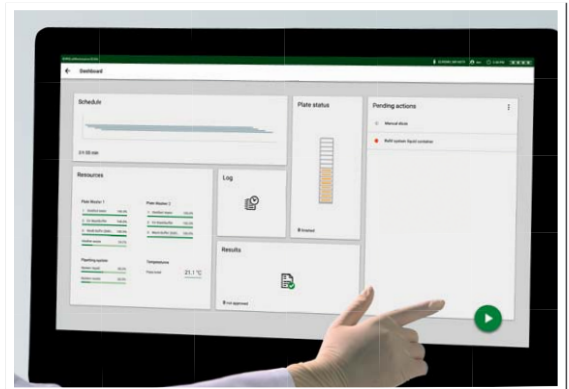
Convenient operation

- Touch-screen PC with intuitive graphic user interface
- Easy starting of user-specific worklists
- ID-based memory function enables flexible and complete use of dilution plate cavities
- Software-supported maintenance with minimum time expenditure
- Visual examination of incubated ELISA plates without interruption of running processes



Overview of the process status

- Convenient system overview with detailed status information on run times, resources and ELISA plates
- Clear display of the current run's time flow
- Exact time information for pending actions for improved planning efficiency



Process safety from A-Z

- Software access with different user accounts and rights
- Transparent traceability of all data entries and changes
- Gapless allocation of test results to the samples and reagents used
- Complete data acquisition by means of integrated barcode scanner for samples, reagents, dilution plates and ELISA plates





System

Patient sample capacity	> 700
Sample material	serum, plasma, cerebrospinal fluid and dried blood spot extracts
ELISA plate capacity	up to 15 plates
Number tests/microplate	up to 12 different
Sample vessels	tubes (outer diameter 10–16 mm, height up to 100 mm) or 96-well plates (ANSI SLAS 1-2004 (R2010))
Number of parameters per run	up to 180
Throughput	> 200 tests per hour
Barcode recognition	autom. registration of sample tubes, reagents, dilution plates, ELISA plates; import of QC certificates via 2D manual barcode scanner

Photometer

Spectral bandwidth	400–700 nm
Dynamic bandwidth	0.000 to 4.000 OD (measurement range)
Filter wavelength	405 nm, 450 nm, 492 nm, 620 nm (4 further filters possible)

Pipetting unit

Pipettor	10 washable stainless steel needles with capacitive liquid level and clot detection
Pipetting volume	5–1100 µL in 1-µL steps
Precision	CV < 10% at 10 µL, CV < 1% at 100 µL, CV < 1% at 1000 µL

Incubation

Capacity	15 positions at room temperature (RT)
Incubators	up to 8 heatable incubators (RT from +5°C to 80°C) or up to 4 heatable shakeable incubators (RT from +5°C to 80°C, 400–1800 rpm)

Wash unit

Wash buffer capacity	up to 6 different wash buffers
Washer head	2x8 dispensing and extraction needles for round- and flat-bottom plates
Remaining volume	< 1.8 µL in flat-bottom plates
Liquid level warning	continuous control in wash buffer and waste containers

Features

Operating system	Microsoft Windows 10 Enterprise 2019 LTSC (64 bits), PC with touchscreen
Bidirect. communication	ASTM
Languages	English, German, French
Electrical data	100–240 V, 50/60 Hz, 800 VA
Measures/weight	approx. 3253 mm x 812 mm x 861 mm (WxDxH)/approx. 450 kg